



# Hybrid project management with Can Do and JIRA

## *Easier coordination and more visibility for your enterprise-wide capacity planning*

Many firms – and particularly their development departments – swear by agile methods like Scrum. Yet these practices often produce a large blind spot for project and portfolio managers when they're doing their planning. Project leaders can't always see whether and when an agile team will deliver the work packages (known as stories in the Scrum world) they need for their project. Another issue is that capacity planning doesn't really exist in agile practice, and this can be problematic for portfolio managers working on enterprise-wide resource management. The result is a major information deficit that can only be resolved by a lot of time-consuming coordination and communication.

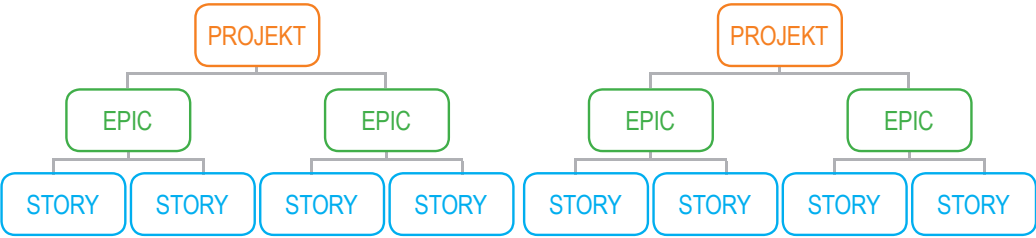
### Epics and stories in Can Do

Can Do provides real hybrid project management with its interface to JIRA, which is probably the most frequently-used tool in agile practice. The stories that comprise an epic in JIRA are interconnected with a project phase in Can Do and appear there as work packages as soon as they have been assigned to a sprint. The JIRA user working on the story is automatically assigned to the relevant Can Do work package as a resource. When the user completes the story in JIRA, the Can Do work package shows up as "Finished" with a completion rate of 100%.

### Resource management in a hybrid environment

The interface enables JIRA users to report to Can Do the hours they worked on a story. These hours are then assigned to the relevant work package in Can Do. With its interfaces to external, third-party systems such as SAP, Can Do sends the reported hours to these systems along with the correct position (such as PSP number). The hours can then be processed further for billing.

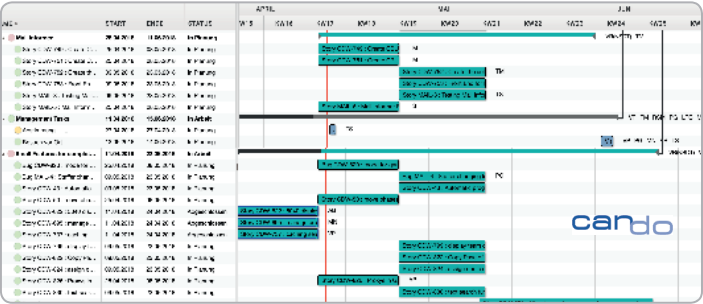
In contrast to most other systems handling integrated capacity planning for hybrid project management, Can Do does not need to send parameters to JIRA. The planning is simply carried out on the departmental level, which is fully integrated into the Can Do capacity analysis function. The way it works in practice is that the departments involved, along with their associated hours, are assigned to the project phase in Can Do that includes the epic and are marked as "subtractable". Can Do recognizes each department and its members of staff. When users take on a story, they appear as a resource in a work package. When they report their hours to the work package (the hours spent on their story), these hours are "subtracted" from the time and effort "budget" assigned to the users' department for the project phase concerned. This gives project managers a control tool that helps them detect budget overruns in good time and take any necessary countermeasures.



In Jira, several epics are assigned to one project (initiative) and each comprises a number of stories. Here, multiple epics from several projects are implemented within a sprint.

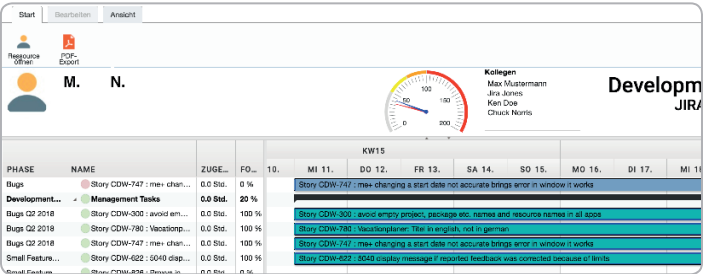
In Can Do, the epics are interconnected with phases. Each of the stories appears as a work package within the phase. When users take on a story in JIRA, their names are assigned to the package (with their initials next to it) and the package's status is shown as "in progress". The users working on the story can now report their hours to the package.

This also enables epics from a sprint to be assigned to different projects in Can Do.



The resource MN (anonymized name) can see the stories they have taken on within their employee overview and report their hours either here or in the timesheet app.

The reported hours can then be imported into external business systems as a basis for cost allocation or billing to the ordering party.



JIRA



Can Do



Third party system (e.g.SAP)

## SUMMARY

- Epics and their stories in JIRA are shown in Can Do together with their resource allocation (team and employees) and the status of the story/work package.
- JIRA users can continue to work exclusively with JIRA and just use a convenient Can Do timesheet function for reporting hours.
- Capacity utilization of JIRA teams and staff are shown in Can Do.
- Enterprise-wide capacity planning available in Can Do by planning on the department level (with subtraction feature).
- Reporting hours in Can Do ensures that data sets are transferred to the right position (PSP number etc.) in a connected external system, which makes it significantly easier to process it further (for billing etc.).
- No need to enter data twice (JIRA and Can Do).
- Full support for SAlFe® process models.