

CAN DO



**Born from the need to revolutionize
Project & Resource Management**

Can Do is the cross-industry project and resource management enterprise software to meet the most diverse challenges. It empowers your employees to achieve sustainable project successes.

Can Do answers the challenges customers are facing

Customer Problems

Project & Portfolio Mgt.

- Projects are...
- ... not even feasible because of capacity are simply approved (no simulation)
 - ... maintained by people in isolation in various tools like Excel
 - ... are not completed on time
 - Extremely high coordination effort between project and line.

Ressource & Skill Mgt.

- Who is scheduled with which skills, in which workload, in which projects?
- Can I implement additional and/or unplanned projects and am I in a position to leverage synergies at the company level?
- Which skills will be needed in the future, which ones can I train and which ones do I have to procure externally?

User Behavior

- Data is poorly maintained by users or not maintained at all
- High effort for data maintenance (time recording, vacation planning, etc).
- Difficult integration of relevant third-party systems (e.g. SAP®).
- Nobody believes the data.

Controlling & Risc Mgt.

- Timely recognition of whether projects are critical in terms of costs, resources... develop and possibilities to intervene.
- Timely, targeted reporting for customers and management.

Transformation

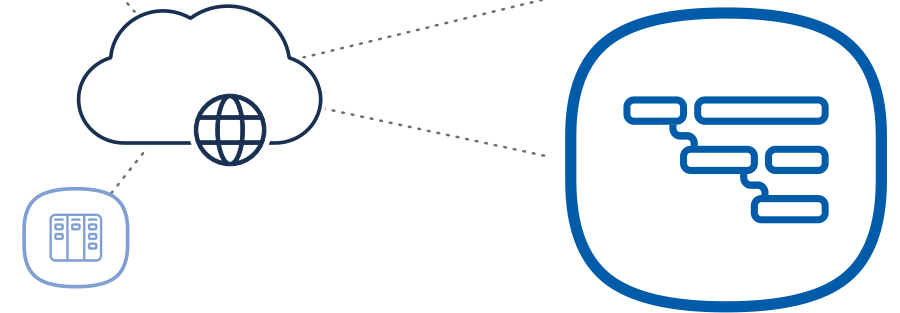
- Hybrid project management: Missing interface between Scrum (e.g. with JIRA®) and classic project management)
- Transformation to agile organization across all departments (skill-based resource planning)

Selected clients who got their problems solved by Can Do



The enterprise software suite for planning projects with Artificial Intelligence

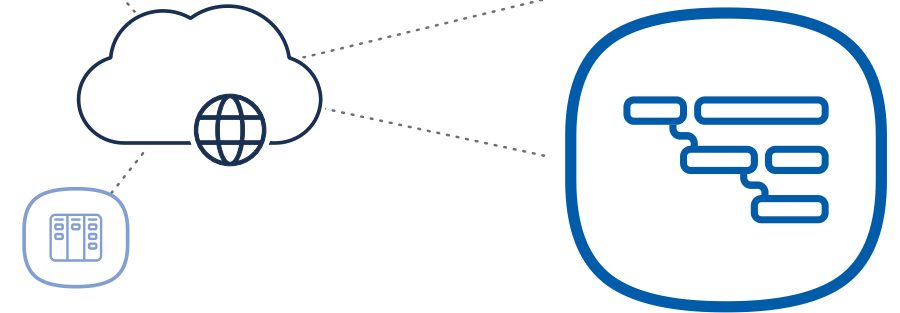
Medium-sized companies and corporate groups rely on our standard software for planning their projects and resources. Because with Can Do they always have the right employees in place.



- Our suite, structured in **apps**, is based on technology for **planning with imprecise data** and artificial intelligence. Engineered by algorithms that check whether **sufficient capacities** are available in the company and whether employees have the **skills** relevant to the project.
- At the same time, our **AI** supports users in dealing with complex planning situations and **simulates future projects** in real time. With artificial intelligence, Can Do prioritizes day-to-day activities and ranks the severity of emerging risks by **recommending actions** such as „take immediate action“ or „ignore.“

The enterprise software suite for planning projects with Artificial Intelligence

Medium-sized companies and corporate groups rely on our standard software for planning their projects and resources. Because with Can Do they always have the right employees in place.



- Our solution also connects the worlds of agile and traditional project management and traditional project management with the **interface to JIRA®**, the most widely used tool for agile software software development.
- Our **cloud solution** is run on **Amazon Web Services® (AWS)** with server location in **Germany** and **EU** and is available for testing and purchase at Can Do and on the AWS Marketplace. If desired, Can Do runs just as fast and secure **on-premise** in your company.
- highest security and data protection (C5, TISAX etc.)

What advantages does Can Do bring to my Company?

Overview and control of company-wide personnel deploymentplace

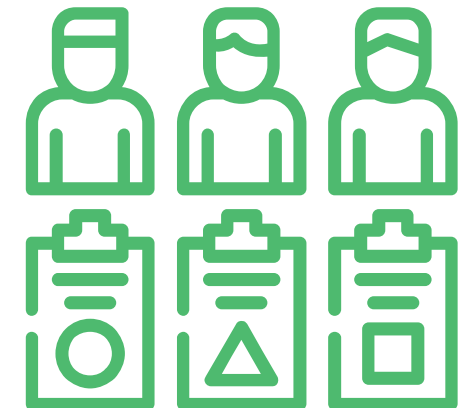
You get a complete picture of the current activities and the associated workload of your employees, teams, departments and divisions, as well as the future utilization situation.



What advantages does Can Do bring to my Company?

Effective prevention of skills shortages

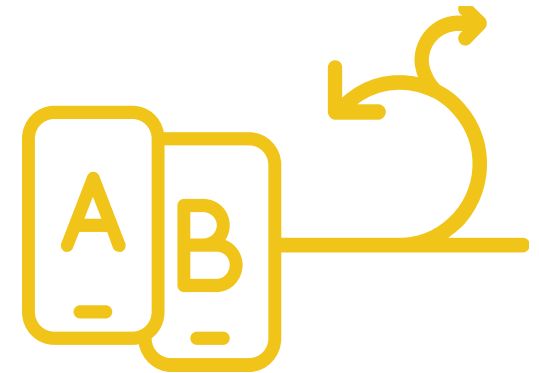
A skills-based capacity planning of your employees shows you which skills are currently available in the company and which skills and capacities will be needed in the future. So you can train your employees and thus counteract a shortage of skilled workers internally.



What advantages does Can Do bring to my Company?

Easy integration and hybrid project management

Simulate different scenarios with Can Do on the basis of realistic assumptions. assumptions, in order to decide which projects you will then successfully you will successfully implement.



What advantages does Can Do bring to my Company?

Early warnings

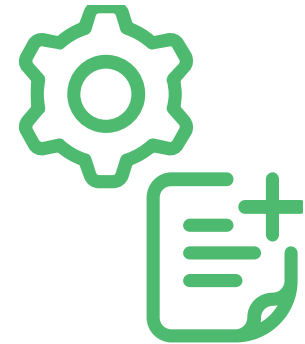
Get a realistic picture of staffing, costs, and risks in your project planning in real time. Additionally you gain a Realistic planning shows the truth. Even inaccurate planning such as "milestone in the third quarter" or "costs between 50,000 - 75,000 EUR" are possible Accordingly you can intervene in time and adjust processes.



What advantages does Can Do bring to my Company?

Automated reporting

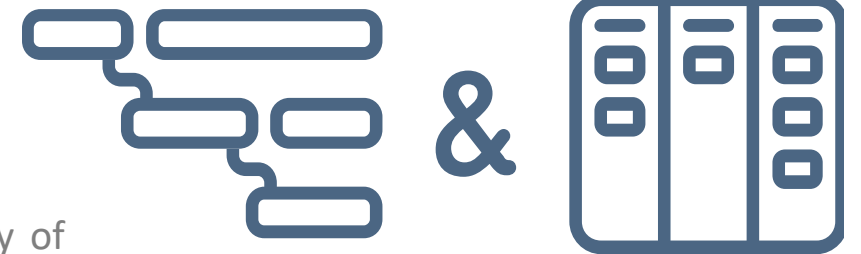
Application- and role-specific dashboards and reports provide you with all the information for automated reporting on a uniform, audit-proof data basis.



What advantages does Can Do bring to my Company?

Easy integration and hybrid project management

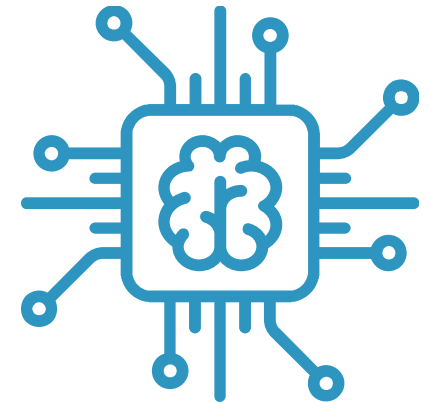
Can Do offers numerous standard interfaces, including SAP®. It also connects interface to JIRA®, it combines the effectiveness of agile working with the transparency of traditional project planning that is required to implement projects on budget and on time.



What advantages does Can Do bring to my Company?

Work easily and comfortably with AI

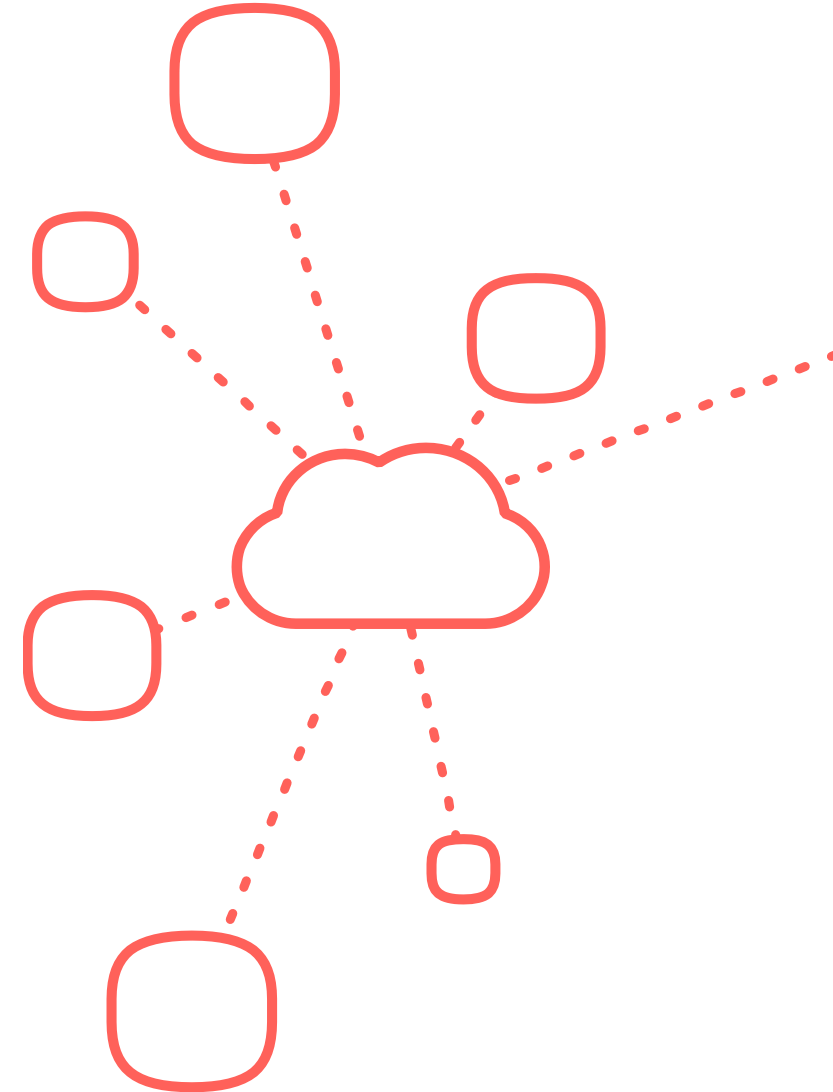
Can Do contains complex algorithms that make your project work easy and comfortable. Our AI analyzes all conceivable constellations and shows you where intervention is necessary and where not. You decide whether you want to follow the suggestion or not.



What advantages does Can Do bring to my Company?

Cloud-based apps

With the SaaS solution for AI-based project and resource management from Can Do, you use Can Do's services in the cloud. The software is deployed on the Amazon Web Services (AWS) infrastructure for tremendous computing power, and offers rapid deployment and scalability.



Software made in Germany

With the apps for project and resource management Can Do offers user-friendly software solutions for optimal project planning and implementation. The audit-proof software has been awarded by IT Mittelstand with the rating „Software made in Germany“. Can Do works GDPR compliant.

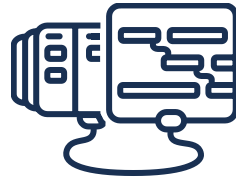


AUDIT PROOF
HGB §§239,257



Can Do at a glance

Make your daily project work more efficient!



Hybrid PM

classic & agile
projects in one
software



Intuitive & Easy

self-explanatory
for beginners
and experts



Comprehensive Overview

realtime
dashboards for
more transparency



Ready for Future

one software for
the entire project
value chain

Your Contact



Thomas Schlereth
CEO - Can Do GmbH

mobile **+49 (0) 171 33 94 085**

email **thomas.schlereth@can-do.de**

web **can-do.de**



Can Do GmbH
Implerstr. 26
81371 München