

What problems does Can Do solve for businesses?

RESOURCES & SKILLS



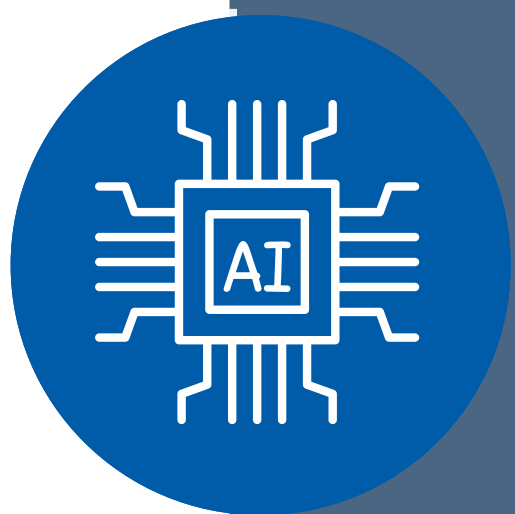
- Unclear, non-transparent employee workload and feeling a constant overload.
- Lack of (global) medium- and long-term capacity planning.
- Time-consuming, complicated coordination between project and line.
- New projects and resources started/requested without pre-simulation.
- Vacation planning without consideration of project load.
- Lack of time reporting at project level.
- Short term capacity issues, expensive external solutions.

PORTFOLIO- & PROJECTMANAGEMENT



- Lack of real-time overview of ongoing projects.
- Status updates mostly manual, not automated.
- No pre-simulation of the impact of new projects.
- Unclear, constantly changing project priorities.
- Diffuse representation of functional dependencies between projects

ARTIFICIAL INTELLIGENCE & METHODS



- Lack of interface between agile and traditional project management.
- Lack of use of artificial intelligence.
- No technical integration with other systems like SAP or SalesForce
- No AI-based methods such as "imprecise planning" or "Watermodel".

CONTROLLING AND RISKS



- Unpunctual, cost- and effort-intensive project completions.
- Unquantifiable planning deviations, no learnings.
- Unclear, non-transparent process for plan changes.
- Uncertain benefits compared to effort/cost.
- Late, last-minute project shifts disrupt stakeholders and other projects.
- Manual risk assessments without consideration of objective risks.

USERS



- Planning without digital fact base leads to mistrust.
- Existence of shadow planning in Excel.
- Ignoring of planning, recording often only pro forma.
- Time-consuming, unpopular data maintenance.
- Multiple data entries in different systems.
- Different planning systems, but uncoordinated implementation.